



Park Lane East, Reigate

Guide Price £850,000





“

This home has been completely transformed by the current owners with the addition of a superb rear extension, creating an inviting space for the whole family to enjoy. The Southerly facing garden is a tranquil haven and the sliding doors from the living space, really bring the outside, in.

”



This semi detached home has been beautifully extended and updated in recent years by the current owners to create an inviting family home. Located just South of Reigate town centre and Priory Park, it is easily accessible for a selection of local schools.

On the ground floor, the open plan living space is simply stunning. South facing to the rear, it is bathed in natural light through the wall to wall sliding doors and skylights and has fabulous views over the rear garden. The kitchen has been well laid out with a large island. There is ample space for dining, as well a comfortable lounge area and also a separate snug which makes a great playroom for the kids.

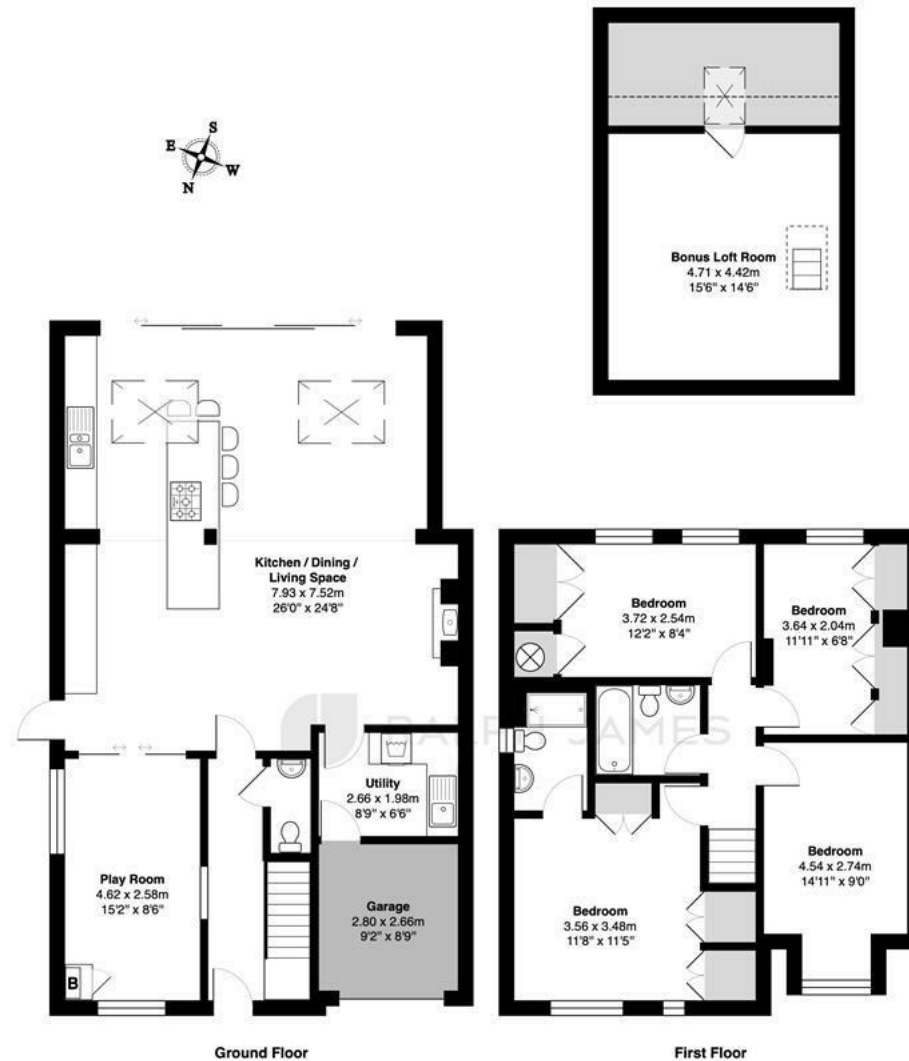
Upstairs all four bedrooms are well proportioned rooms, with three of them being doubles. The main bedroom comfortably fits a super king bed and has plenty of built in storage as well as an en suite shower room. A bonus feature of this home is the sizeable loft room which is currently accessed via a pull down ladder. This could easily be turned into another bedroom with an en suite and already has a velux window in place.

Outside the rear garden is practically due South facing so it catches the sun all day long. There is a spacious patio area for dining and plenty of room for children to play on the lawn. The front of the property provides off road parking on the driveway and the garage, although having been partly converted, still provides great storage for bikes etc.



Need to know

- Spacious, four bedroom family home
- Large, bright, extended open plan living space, opening onto the rear garden
- Separate snug/ family room
- Useful utility room and downstairs cloakroom
- Main bedroom with en suite shower and built in wardrobes
- Two further double bedrooms and a fourth single room
- Partially converted loft room accessed via a pull down ladder
- Southerly facing rear garden
- Off road parking to the front
- Excellent location, close to Priory Park and Reigate town centre



Interested?

reigate@ralphjames.co.uk
01737 333677

ralphjames.co.uk

Park Lane East, Reigate

Total Area: 186.3 m² ... 2005 ft²

FOR ILLUSTRATIVE PURPOSES ONLY:

Whilst every attempt has been made to ensure the accuracy of the floor plan shown, all measurements, positioning, fixtures, features, fittings and any other data shown are an approximate interpretation for illustrative purposes only and are not to scale.

No responsibility is taken for any error, omission, miss-statement or use of data shown.

The above statement applies to both 'Still Moving London LTD' and the Company or individual displaying this floor plan.

Unauthorised reproduction prohibited.

Â© Still Moving London LTD (www.stillmoving.london)

RALPH JAMES